

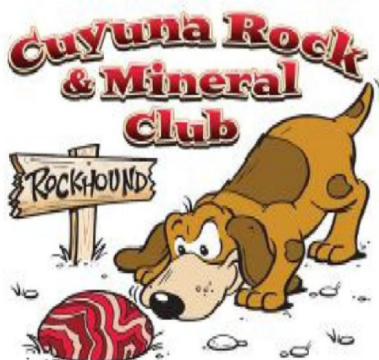
Cuyuna Rock, Gem and Mineral Society

The Agate Explorer

June 2018

Don't wait to sign up! We need an accurate number to plan, and it could fill up!

Pebble Pups Day Camp



Friday, June 8: 8:30 to 4
Franklin Arts Center, lower level
1001 Kingwood St., Brainerd
&

Saturday, June 9, 9-12
Lake Superior agate pick
Brainerd area location

\$25/non-member; \$10 2nd/3rd sibling;
\$15 member

Ages groups:
6-9 and 10-12.

Snacks provided.

Bring own lunch & beverage;
refrigeration available.

Do you love rocks? Come find out what rocks are in Minnesota.
Learn how to pan. Wire wrap your own necklace.
And there's more!

*Do you have a mystery rock?
Bring it for the Wizard of Rocks to identify!*

For more information or to register:
www.cuyunarockclub.org, 320-250-8120,
or 218-831-2665.

Sponsored by the Cuyuna Rock, Gem, and Mineral Society



Franklin Art Center

Club Information

Meeting Place

Lower level
Franklin Arts Center
1001 Kingwood St, Brainerd, MN 56401

Directions

.4 mile east of Business Hwy. 371
& Hwy. 210 intersection.
(Castle turret water tower.)

Date/Time

the 2nd Saturday of each month
at 2 p.m. unless otherwise noted.

Club Dues

\$20/ family

Free /unaccompanied juniors
Membership runs
from Jan. 1-Dec. 31st.

Club Calendar

June 8 and 9—Kids' Day Camp
June 9—Board mtg. at 12:30;
general mtg. at 2; Dr. William
Cordua on the Baldwin Boulder
July 28—Potluck Picnic
August 11 or 12—Get Pickin'

Information subject to change.

Club Purpose: To foster an interest (& encourage young & old) to study earth science, enjoy the art of lapidary, hunting for rocks, and semi-precious stones. We also strive to use what we know and acquire to further educate everyone who has an interest in our hobby.

We are a not-for-profit organization.

2018 Pebble Pups Day Camp

Sponsored by the Cuyuna Rock, Gem, and Mineral Society
Franklin Arts Center lower level, 1001 Kingwood St., Brainerd
www.cuyunarockclub.org

Friday, June 8 8:30 a.m. to 4:00 p.m.

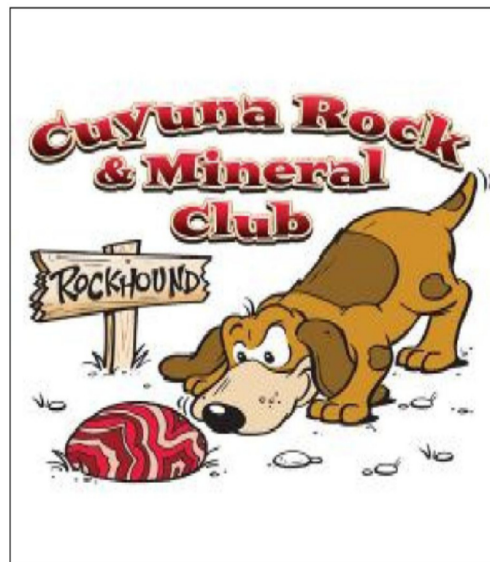
Saturday, June 9 at 9:00 a.m. to approximately noon

Saturday is field trip to look for Lake Superior agates at Brainerd area location. (In case of inclement weather or unavailability of location an indoor activity will be held at the Franklin Arts Center.)

Information given out Friday afternoon.

Bring a rock for the Wizard to identify!

Cut and save top portion.



Ages group: 6-9 and 10-12.

Bring lunch & beverage. Refrigeration available. Snacks provided.

\$15 for Club members \$25 for non-Club members \$10 for sibling (2nd child)

Make checks payable to Cuyuna Rock, Gem, & Mineral Society.

Registration not complete until payment is made.

Rocks are dirty! Please wear appropriate clothing.

Registration Form

Name _____ Age (as of 6/8/2018) _____

Parent/Guardian Name(s) _____

Phone Number(s) _____

Please list the first name of the parent/guardian that corresponds with each phone #.)

Address _____

Street/box # City Zip

Any medical issues/allergies? _____

Who can pick up student? _____

Who cannot pick up student? _____

Member price \$15.00. _____ Non-member price \$25.00. _____ Sibling price \$10.00 _____

Refunded only if cancelled before 6/1. Registration taken until filled.

Please make checks payable to: Cuyuna Rock, Gem, & Mineral Society

Mail registration form to: Cuyuna Rock, Gem, & Mineral Society, 1001 Kingwood St., Suite B-40, Brainerd, MN 56401.

Rox Box

A place to advertise rock items to sell and to inquire about items to purchase.



The Cuyuna Rock, Gem & Society accepts no responsibility for any dissatisfaction that may occur by either party, seller or buyer. The Society does not profit in any way by sales transactions.

For Sale: Knapped Replica Points;

Many to choose from - most priced at \$5 per inch or less. Many made by Cherokee native in Oklahoma.



Contact Harry Wagoner at 218-927-9983 or hpwagy@centurylink.net.

For Sale: Thumler

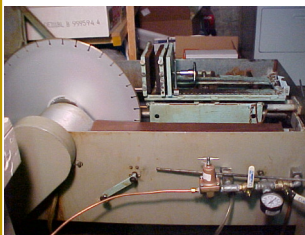
Model B Tumbler 15 lb. capacity; hex steel barrel, rubber liner. 2 units available.

\$150 each. Contact Harry Wagoner—218-927-9983 or hpwagy@centurylink.net

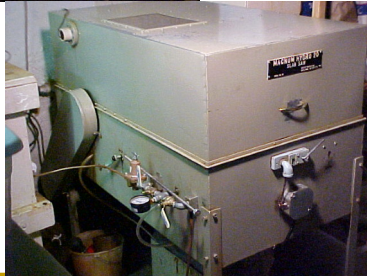


Wanted: Rough specimens of orbicular granite especially from Peru. Also orbicular diorite or other plutonic rocks. Harry A. Wagoner 218-927-9983.

For Sale: 20" Magnum Hydro slab saw by Magnum Engineering. 3 feed system, brand new blade, hydraulic feed is brand new, settling tank coolant system, and



much more. Asking \$1700. Call Butch Goldenstein at 320-252-3335.



For Sale: I have one of these for sale - \$30; Harry Wagoner; hpwagy@centurylink.net or 218-927-9983.



Jewelry Making Tip

By Brad Smith

www.BradSmithJewelry.com

Protecting Finished Surfaces

I figure that any accidental scratch I make on a piece means about 15 minutes of extra sanding and polishing. So after finishing major surfaces I typically cover them with some masking tape to avoid any scratches when doing final work like cleanups and setting of stones. The blue masking tape used by painters works particularly well because it doesn't leave a sticky residue.



3rd Annual Pierz Agate Show & Swap

June 2nd and 3rd 10am—5pm at 603 Park Ave. SE Pierz MN

Buying and Selling Lake Superior Agates and Mineral Specimens.



Scott Wolter Agate Display and Book Signing.

Food
Beverages
Kids Activities
Door Prizes
Free agates for children.
Swimming
Camping
Family fun

For more info contact TJ's Coin and Currency + Collectibles at 218-831-8706



Mineral Encyclopedia



Rutile

What is Rutile?

Rutile is a titanium oxide mineral that is most commonly found

in granites, pegmatites, and metamorphic rocks. It is also found in sands derived from the weathering of these rocks. Rutile also forms as slender crystals within quartz and micas. It is a common mineral in the alluvial sands that are dredged for magnetite and ilmenite.

Uses of Rutile

Rutile is used as a coating on welding rods. It is also used as an ore of titanium, a metal

used where light weight and high strength are needed. Some rutile is used in the production of pigments for paints.

<https://geology.com/minerals/>

Physical Properties of Rutile

Chemical Classification Oxide

Color Red, reddish brown, reddish black

Streak Pale brown

Luster Adamantine to submetallic

Diaphaneity Transparent to subtranslucent

Cleavage Good

Mohs Hardness 6 to 6.5

Specific Gravity 4.2 to 4.4

Diagnostic Properties Luster, color

Chemical Composition Titanium oxide, TiO₂

Crystal System Tetragonal

Uses An ore of titanium, pigments, inert coating on welding rods

An Ancient Horse Unearthed in a Utah Backyard

Paleontologists recently determined that a skeleton discovered during a landscaping project belonged to a horse from the Pleistocene Era.

Paleontologists last week identified the skeleton of a horse from the ice age in Lehi, Utah — a particularly unusual discovery given that much of the western part of the state was underwater until about 14,000 years ago. Buried for thousands of years beneath seven feet of sandy clay, the remains were discovered only when the Hill family began moving dirt around their backyard to build a retaining wall and plant some grass.

Laura Hill said she and her husband, Bridger, uncovered the skeleton last September, but didn't think much of it at first. They wondered if it was a cow; Lehi is about 15 miles from Provo and was once mostly farmland that hugged the edges of nearby Utah Lake. She consulted a neighbor, a geology professor at Brigham Young University, who examined the bones, and guessed they were from a horse from the Pleistocene Era.

"I was shocked," Ms. Hill said. "This is something we did not expect."

Utah is home to several fossil sites where dinosaurs and other ice age animals, including mammoths, mastodons and saber-toothed tigers, have



been discovered. Horses have roamed North America for 50 million years, said Ross MacPhee, a curator in the department of mammalogy at the American Museum of Natural History. During the Pleistocene Era, the continent was dominated by two kinds of horses, he said, adding that he believes today's domesticated horses are linked to one of those breeds. Despite harsh conditions, Mr. MacPhee said, "those horses could live anywhere."

Rick Hunter, a paleontologist at the Museum of Ancient Life, a short drive from the Hill home, said Ms. Hill approached him last month to investigate the family's discovery.

He and a team from the museum's lab, where they study dinosaur fossils, went to her home.

The skeleton was missing its head, but was otherwise intact. Mr. Hunter estimated the horse to be the size of a Shetland pony; it was found lying on its left side, with all four legs tucked near its torso. Parts of the skeleton were damaged from exposure to weather. Curious onlookers had picked at the ribs and other bones.

The skeleton was taken back to the museum where it will be cataloged, preserved and repaired. Unlike with dinosaurs, the horse's bones were dehydrated and not yet fossils. Fossilized minerals in bone turn to stone, but the horse was not old enough for that to have happened.

Mr. Hunter also hopes to pin down the horse's age with greater precision. The current estimate of 14,000 to 16,000 years is the team's best guess until it can be studied further. Once the skeleton is reassembled, Mr. Hunter said, he would like it to become a permanent exhibit at the Museum of Ancient Life.

<https://www.nytimes.com/2018/05/03/science/horse-skeleton-utah.html>



June Birthdays

JoAnn Moe	6/03
Vicki Hanson	6/05
Brad Hotchkiss	6/09
Steve Johnson	6/17
Val Lucken	6/17
Ryan Larson	6/19
Dave Moe	6/30

June Anniversaries

Harry & Phyllis Wagoner	6/07
Ron & Judi Dick	6/14
Deb & Ted Mork	6/17
Rod & Joanie Hanson	6/28

Sunshine Requests

If you know someone who could use a little sunshine—birth, illness, surgery, family death—please contact Christi Higgins at 320-224-6650.



Top Spots For Gem Hunting In The US

Bonanza Opal Mine, Nevada

If you're gem hunting for fire opals, visit the Bonanza Opal Mine in Denio, Nevada. The mine is open from May to September.

Bonanza Opal Mine is open for the whole family. Kids love Bonanza, where they are free to roam the tailings and dig for fiery, precious opals. Bring the kids for a day of digging.

The staff will take care of you. They'll show you what to look for and how to see

it. If you don't have a small rake, you can rent one. Unlike other mines in the valley with hard clay, the tailings are dry, rocky soil from the mining operations. The digging is easy—and fun.

All mining is 'weather permitting' • \$70 per day for tailings • Discounts for larger parties and rockhounds with club membership. Dry and wet opals available for sale at the mine.

www.bonanzaopals.com or call 775-375-5955.

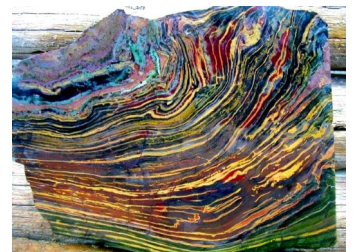


The World of Jaspers Kaleidoscope

The Kaleidoscope discovery was made by Dale, Derek, and Brian Rhode in the winter of 2007/2008 on a prospecting trip in Oregon. The deposit quickly proved beyond a doubt to be one of the most significant deposits ever discovered in the northwest by its vast varieties of color and pattern and gem quality jasper and agate.

Dale sat in the car while his sons checked

out a promising area. After hours he spotted them on their way down the mountain and the closer they got the more I could see they had loaded packs and sure seemed in a rush for coming off such a dangerous slope. When they got close enough I could see their faces and all I could see was grins.



Cuyuna Rock, Gem, and Mineral Society Board Meeting Minutes May 12, 2018

The Meeting was brought to order at 12:35 pm by President Ed Opatz. Board members present were: Chuck Durnan- Vice President, Joanie Hanson- Secretary, Kevin Martini- Treasurer, Board members at large - Sharon Smith, Vern Iverson, and Keith Lorensen.

Show Wrap Up – Approximate attendance: 3500 people.

Reviewed how the entrance changes affected the show. We are looking at how it all worked for the inside vendors, customers, and general flow of the show. All thoughts and comments are important to us to make this a successful smooth running show.

We discussed issues with the club concessions. In the future we will only use equip-

ment owned by the club. Also looking at having the concession vendors do the snacks and coffee.

Lisa reported that Kid's Corner was more successful on Sunday due to there being more kids present.

Overall a very successful show.

Picking Places for Kid's Camp- There has been a spot offered and Ed is checking on it.

Club agate pick with Erich Ess May 20th at 1:00pm near Aitkin- an email/or snail mail will be sent to members with map details.

The board voted to allow the use of the new club bags for the kid's camp.

The club picnic will be at the Hallett House in Crosby on July 28th, 11:00 am arrival, will eat at noon, activities after. All members and families welcome. Potluck, with the club will provide hotdogs, brats and buns.

The Franklin Arts program will be August 9 in the evening- more information to follow as we get closer to the date.

The summer show season is starting- there will be signups at the meetings. Please consider signing up for a few hours to help with the spinning wheel at these shows. They are lots of fun.

We will plan an appreciation field trip to "Get Picking" August 11 or 12 depending on availability. The club will pay for the bus and all entrance fees for those that volunteered in some capacity at the show. If you want to come but did not volunteer at the show you must pay your own way.

Treasurer's Report- Kevin is still adding up all the expenses of the show and will post the report at the clubhouse.

Respectfully submitted,
Joanie Hanson, Secretary

Cuyuna Rock, Gem, & Mineral Society on the Web

www.cuyunarockclub.org

Cuyuna Rock, Gem, and Mineral Society General Meeting Minutes May 12, 2018

The meeting was called to order by President Ed Opatz at 2:20pm. 35 people were present including 5 guests.

Show wrap- Sharon: Many thanks to all of the members that helped with the show- we couldn't have done it without you. Also we couldn't do it without all of the amazing vendors that come to the show. You are what makes for a successful show so many thanks to you as well. Attendance: 3500 people.

The winner of the Show Card Drawing (Amazonite specimen) was Emily Braele. The winner of the Grand Prize Drawing (Rock Tumbler) was Jonie Hardenbrock. Ed will contact them and see that they get their prizes. Congratulations to them.

There was a lot of good discussion about how the show went with the new entrance.



We're on Facebook!

Cuyuna Rock, Gem & Mineral Society

This is a closed group, so you must ask to join. After being approved you can follow the members' posts and add your own information.

All suggestions were noted and we will continue reviewing vendor suggestions for next year. This is your show so all of your ideas are important in the planning for next year. We have decided to have an Appreciation Field Trip instead of a dinner for all of the people that volunteered in some capacity for the show. It will be August 11 or 12 to "Get Picking" in Cloquet depending on availability. The club will pick up the tab for the bus and the entrance fee. If you did not volunteer at the show but want to attend you will be responsible for your own way.

Franklin Arts Center 10th year celebration will be August 9th a Thursday evening. More info to follow as we get closer to the date.

Summer show schedules are out at meetings and gatherings. Please consider volunteering at one of the shows and at the Fair for a few hours. They are lots of fun.

Agate pick with Erich Ess will be May 20th at 1pm near Aitkin. Directions were mailed or emailed.

Door prize winners were: Kathy Peterson,

Cindy Goldenstein, and Kristine Peterson. Door prizes today were a choice of geodes and cutting them.

Several people had items for show and tell.

Many members have been helping to put the clubhouse and rock room in order to get ready for kid's camp. Many thanks to all of them for their help.

Kid's camp is June 8 & 9, we can still use some more volunteers to help. Contact Marcia Opatz or Joanie Hanson and leave a message if you are able to help.

New club t-shirts and bags are available for purchase at meetings- see Vern.

Respectfully submitted,
Joanie Hanson

***The Franklin Arts Center is
having a 10th anniversary
celebration in August. Stay tuned
for more information about the
Club's role in this event.***



June Rock Shows

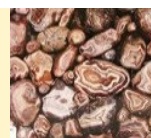
1-2—PRICE, UT: Castle Country Rock, Fossil & Mineral Show, Carbon County Event Center; Daily 10-7; free; e-mail: Pbraunrocks@gmail.com
 1-3—TULSA, OK: Gem Faire Inc, Expo Square; Fri. 12-6, Sat. 10-6, Sun. 10-5; \$7, Under 12 free; Website: <http://www.gemfaire.com>
 1-3—BONNEY LAKE, WA: Puyallup Valley Gem & Mineral Club, Swiss Park; Daily 10-5; Free; Website: info@puyallupgemclub.org
 1-3—FLAGSTAFF, AZ: Coconino Lapidary Club, Silver Saddle Outdoor Market; Fri. & Sat. 9-5, Sun. 9-4; Free; Website: flagstaffmineralandrock.org
 1-3—COLORADO SPRINGS, CO: Colorado Springs Mineralogical Society, Norris-Penrose Event Center; Fri. & Sat. 10-5, Sun. 10-4; \$5/day \$8/3 days, Under 13 free; Website: www.csms1936.com
 1-3—WAUSEON, OH: State Line Gem & Mineral Society, Fulton County Fairgrounds; Fri. 12-6, Sat. 10-6, Sun. 11-4; \$4, Srs/Students \$3, Under 13 free; Website: statelinegms.com
 2—MACUNGIE, PA: PESA, Macungie Memorial Park; Sat. 8:30-3; \$2; e-mail: mineralfest@verizon.net
 2—DELTA, CO: Delta County Rock Wranglers, Heddles Recreation Center; 9-5; Free; e-mail: mnasinton@tds.net
 2—COLFAX, NC: Greensboro Gem & Mineral Club of NC, Piedmont Triad Farmers Market; 9-5; Free; Website: www.ggmc-rockhounds.com
 2-3—COEUR D'ALENE, ID: North Idaho Mineral Club, Kootenai County Fairgrounds; Sat. 9-5, Sun. 10-4; \$3, Under 12 free; e-mail: Showchair2018@gmail.com
 2-3—SPRINGFIELD, MO: Ozark Mountain Gem & Mineral Society, Missouri Institute of Natural Science; Sat. 10-5:30, Sun. 10-4:30; Free; Website: www.omgms.rock
 2-3—CANANDAIGUA, NY: Wayne County Gem & Mineral Club, Greater Canandaigua Civic Center; Sat. 10-5, Sun. 10-4; \$3, Under 12 free; Website: www.wcgmc.org
 2-3—MC CALLA, AL: Alabama Mineral & Lapidary Society, Tannehill Ironworks Historical State Park; Daily Sat. 9-5; \$5; Website: www.alabama.lapidaryclub.com
 2-3—MARION, KY: Ben E. Clement Mineral Museum, Fohs Hall; Sat. 9-5, Sun. 9-4; Free; Website: clementmineral-museum.org
 7-10—FAIRPLAY, CO: Jay Penn, Fairplay, CO; Thu.-Sat. 9-5, Sun. 9-4; Free;

Website: <http://abqfallshow.wixsite.com/fairplay>
 8-10—CARTERSVILLE, GA: Damian w/ Bellpoint Promotions, Clarence Brown Conference Center; Fri. & Sat. 10-6, Sun. 10-5; \$5, Under 16 free; Website: www.bellpointpromotions.com
 8-10—PARK HILLS, MO: Mineral Area Gem Mineral Society, Missouri Mines Historic Site, Fri. & Sat. 9-6, Sun. 9-4; Free; Web site: <https://www.facebook.com/groups/1249800061698210/>
 8-10—LA HABRA, CA: North Orange County Gem & Mineral, LaHabra Community Center; 101 West La Habra Blvd; Fri. 5-8, Sat. & Sun. 10-5; Free; Website: www.nocgms.com
 8-10—RALEIGH, NC: Frank Cox Productions, North Carolina State Fair; Daily 10am-5pm; Free; Website: frankcoxproductions.com
 9—KENT, CT: Connecticut Museum of Mining & Mineral Science, 9-4; Free; Website: www.ctamachinery.com
 9—LEES SUMMIT, MO: David & Judy Stahl, 603 SE Green; 9-4; Free; e-mail: lsdandj@att.net
 9-10—SAN FRANCISCO, CA: Pacific Crystal Guild, Fort Mason Center; Sat. 10-6, Sun. 10-4; \$12, Under 12 free; Website: www.crystalfair.com
 9-10—BUTTE, MT: Butte Mineral & Gem Club, Butte Civic Center Annex; 1340 Harrison Avenue; Sat. 10-5, Sun. 10-5; \$3, Under 12 free; contact Pete Knudsen, (406) -490-5828.
 9-10—GLEN DORA, CA: Glendora Gems, Goddard Middle School; Sat. 10-5, Sun. 10-4; Free; e-mail: ybidwell2@aol.com
 9-10—ESCONDIDO, CA: Palomar Gem & Mineral Club; 340 N. Escondido Blvd.; Sat. 10-5, Sun. 10-4; \$5, Srs/Students \$3; Website: www.palomargem.org/annual-gem-mineral-and-jewelry-show/
 15-16—QUARRYVILLE, PA: Lancaster County Fossil & Mineral Club, Solanco Fairgrounds, Fri. 10-6, Sat. 10-4; \$3; Website: <https://www.facebook.com/LancasterFossilandMineralClub>
 15-17—MARBLETON, WY: Sublette County Rock Hounds, Sublette County Fairgrounds, Fri. & Sat. 9-5, Sun. 9-4; \$2, Under 12 free; e-mail: jimgray@wyoming.com
 15-17—SANDY, UT: Gem Faire Inc, South Towne Expo Center; Fri. & Sat. 10-6, Sun. 10-5; \$7, Under 12 free; Website: <http://www.gemfaire.com>
 15-17—REEDSPORT, OR: Lower Umpqua Gem & Lapidary Society, Reed-sport Community Building; Fri. & Sat. 10-5, Sun. 10-4; Free; Website: Reed-sportRockandGemShow.com

22-24—SAN DIEGO, CA: Gem Faire Inc, Scottish Rite Center; Fri. 12-6, Sat. 10-6, Sun. 10-5; \$7, Under 12 free; Website: <http://www.gemfaire.com>
 23-24—NEW YORK, NY: New York Mineralogical Club, Watson Hotel; Sat. 10-6, Sun. 11-5; \$6, Under 12 free; Website: www.newyorkmineralogicalclub.org
 23-24—CULVER CITY, CA: Culver City Rock & Mineral Club, Veterans Memorial Auditorium; Sat. 10-6, Sun. 10-5; Free; Website: <http://www.culvercityrocks.org/>

June 2018-July 2018

29-1—FARMINGTON, NM: San Juan County Gem & Mineral Society, McGee Park, San Juan County Fairgrounds; Fri. & Sat. 10-6, Sun. 10-5; Free; e-mail: torybonner@gmail.com
 29-1—SISTERS, OR: Karmic Beads & Gems & CRS Grippers, Creekside Park; Fri. & Sat. 9-5, Sun. 9-4; Free; Website: www.karmicbeadsandgems.rock
 29-1—ELDON, MO: Osage Rock & Mineral Club, Eldon Community Center; Fri. 2-6, Sat. & Sun. 9-6; Free; e-mail: ormc2018show@centurylink.net
 30-1—GRAPEVINE, TX: Arlington Gem & Mineral Club, Grapevine Convention Center; Sat. 9-6, Sun. 10-5; \$6, Srs/Students/Children \$5; Website: www.agemclub.org



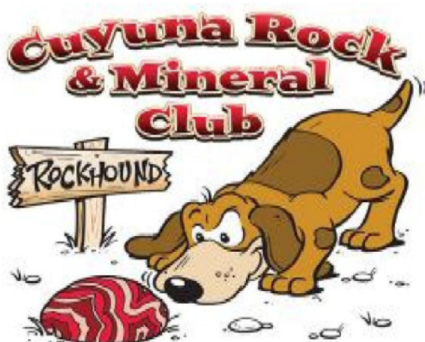
Rock Room

Here is an inventory of what is available for Club members to purchase. Stop in when you come to the Clubhouse!

Grit and Polish
 Montana Moss & Blue Agate
 Montana Petrified Wood
 Oregon Geodes
 Chalcedony
 Desert Rose
 Plume Agate
 Yellow Jasper
 Bruno Jasper
 Owyhee Picture Jasper
 Brazilian Agates
 Amethyst
 Tee Pee Canyon Agate
 Hauser Bed Agate—not priced yet
 Slabs of all sizes and types
 Condor Agate
 Septarian Nodules
 79 Bed Geodes—Oregon
 Moroccan White Agate
 Various slabs of many sizes

Marcia Opatz, Editor
Cuyuna Rock, Gem
& Mineral Society
1001 Kingwood Street
Suite B-40
Brainerd, MN 56401

FIRST CLASS MAIL



The Agate Explorer

June 2018

Official Publication of the Cuyuna Rock, Gem & Mineral Society

Members of AFMS & MWF



Notes from the President

Thanks again for all the help at the show, and a special thanks to all non-members that helped too. Please thank them when you see them. It was a great event.

We are still looking for places to pick agates this summer. PLEASE talk to landowners to see if you can find somewhere to look. I am also contacting another club president about a recent field trip that they took.

I will be working on the Utah field trip. If you have ideas of where to go in that state, or somewhere along the way, please let me know.

I have been contacted by the Minnesota Mineral Club about going together on field trips. If you have an opinion on this, also let me know.

Ed Opatz

Club Officers & Board of Directors

President: Ed Opatz
opatz1@att.net
320-250-1363

Vice-President: Chuck Durnan
cpdurnan@gmail.com
218-699-3685

Secretary—Joanie Hanson
jkh2upnorth@msn.com
218-831-2665

Treasurer: Kevin Martini
kjspumanti@yahoo.com
218-770-8917

Director: Vern Iverson
Director: Keith Lorensen
Director: Sharon Smith

Newsletter Editor: Marcia Opatz
theisma@hotmail.com
320-250-8120